

# WEEP HOLES

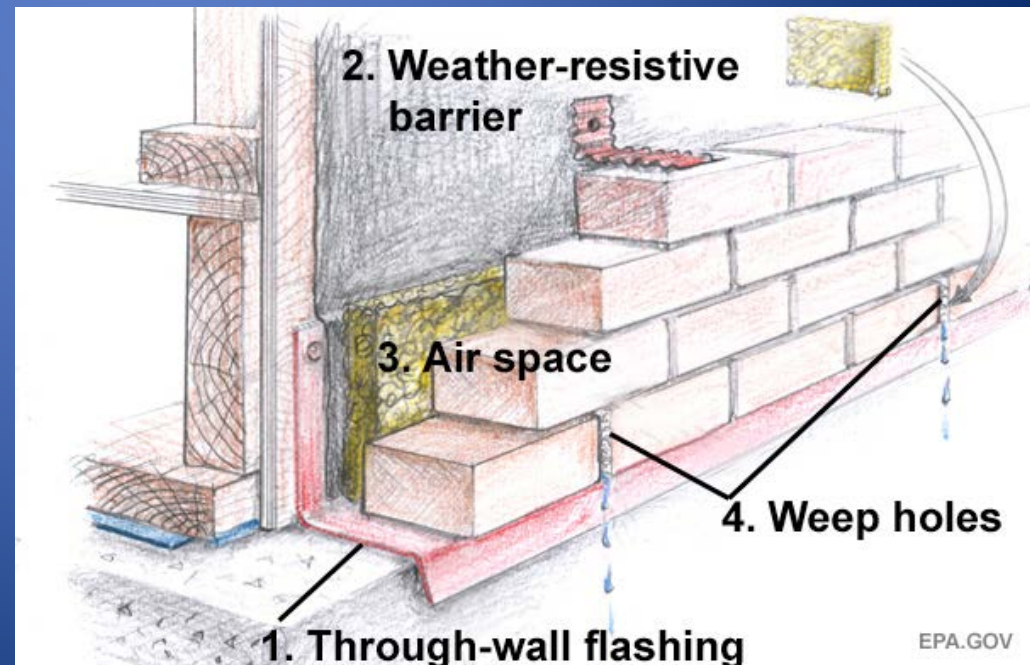


Nicole Zielinski  
Taryn Gutierrez

Building Technology I  
October 17, 2013

# RESPONSIBILITIES OF THE WEEP HOLE

- Allows cavity wall to function properly
- Prevents moisture problems
- Drains excess water (collected on flashing) to the exterior of the building
- What happens in the absence of weep holes?



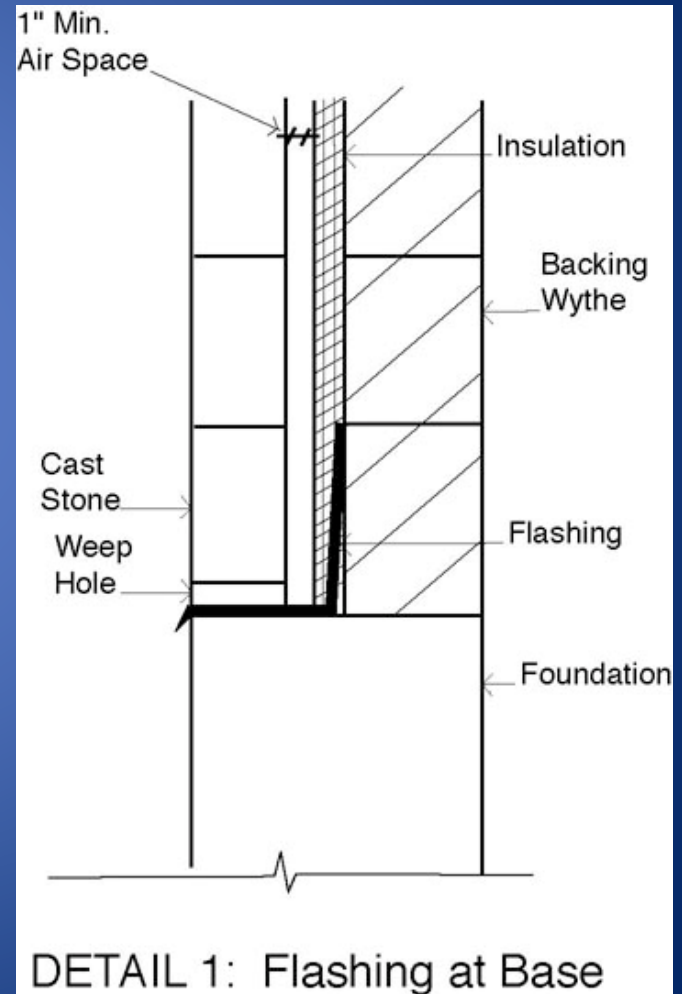
# EVOLUTION OF THE WEEP HOLE

- Open Head Joint (un-mortared, highly effective)
- Louvered Vents (keeps insects out)
- Rope Wicks\* (cotton fibers draw moisture from interior)
- Tubes (1/4' D, plastic or metal, least noticeable & effective)
- Hybrid: Tube/Cord Combo
- Cellular Vents (“honeycomb”)



# MATERIALS AND METHODS

- Materials
  - Cotton fibered rope, flexible plastic, aluminum, iron, mesh, or a combination of the above
- Where should they be placed?
  - Installed in the masonry head joints above all flashing courses.
  - Anywhere the cavity is interrupted, you must install flashing and weeps.



# SOURCING

- Web Rigging Supply in Barrington, IL produces rope
- Other weep holes may be ordered from Japan, China, and Taiwan



# Sources

- <http://cbiconsultinginc.wordpress.com/2011/01/27/masonry-wall-flashing>
- <http://www.caststone.net/csi/47.html> (Flashing Detail)
- [http://www.h-b.com/index.php?main\\_page=product\\_info&products\\_id=58](http://www.h-b.com/index.php?main_page=product_info&products_id=58) (Louvered Vent, Plastic Tubing, Cellular Vent)
- <http://www.masonryconstruction.com/brick/installing-weep-holes.aspx> (Detailed Analysis)
- <http://globalbhasin.blogspot.com/2012/07/global-natural-resources-cotton.html> (Rope Factory)